



FEATURES

Intended Use:	Exteriors
Installation:	Ceiling/wall Mounting
Body/Structure:	Die-cast aluminum body EN AB-47100
Painting:	Polyester powder coating with special outdoor treatment (sandblasting, pickling, No. 3 washing, fluorozincing, epoxy powder primer and polyester powder surface finish).
Finish:	Grey
Reflector/Optics:	LED lens in methacrylate
Glass/Screen:	Clear screen-printed tempered glass
Driver:	Not included; must be ordered separately

TECHNICAL DATA

Beam:	Concentric symmetrical 10°
Current:	650mA
Insulation class:	3
Weight:	3 kg
IP grade:	65
Glow wire:	850 °C
Lamp included:	Yes
LED type:	Power LED
Overall power:	34 W
Appliance flow:	2473 lm
Nominal duration:	50000 (h) L80 B20
Color temperature:	3000 K
Color rendering index:	>90
Color consistency:	4 SDCM
Bug Evaluation:	B3-U1-G0
CEN flow code:	90-99-100-100-100

LIGHT SOURCE: 2 x LED 17.00W 1530lm



NOTES

On request: Light beam 25° - 50° - 65°

Per versione RGB - For RGB version

645247 Driver + Mixer

645246 IR controller

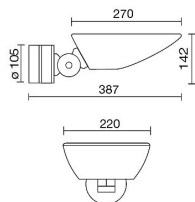
645245 Remote

Maximum nighttime ambience temperature when the fitting is on not exceeding 50°C

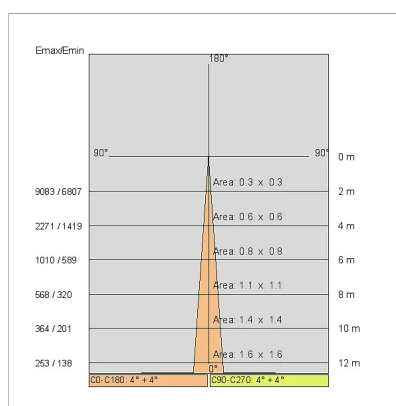
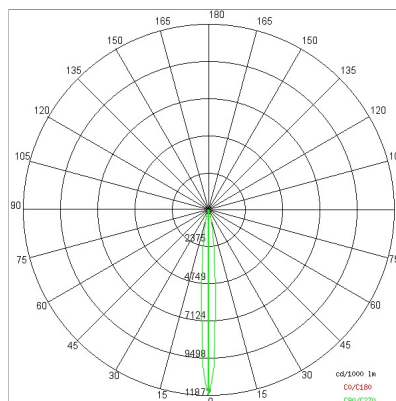
Minimum nighttime ambience temperature when the fitting is on not lower than -20°C

Maximum daytime ambience temperature when the fitting is off not exceeding 60°C

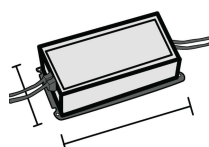
TECHNICAL DRAWING



PHOTOMETRIC CURVES



DRIVER



645846
Driver
Driver 350/1050mA

ACCESSORIES

Driver+Mixer

645247

IR controller

645246

Remote

645245

COMPANY

Side Spa has always been a benchmark in the manufacturing industry for its constant focus on product quality, assembly and sustainability of its items. The company is distinguished by its dedication to offering customers the highest quality products that meet needs and exceed expectations.

Side Spa pays the utmost attention to the quality of its products. Each stage of production undergoes rigorous quality control to ensure that only first-class items reach the market. By using high-quality materials and adopting state-of-the-art manufacturing processes, the company is able to offer products that stand the test of time and maintain their performance over the years. Quality is a top priority for Side Spa, which strives to meet the highest standards of excellence.