

PAR 56 COLOR TKT RGBW POWER - RGB E9605-RGB-15



EXTERIOR > UNDER WATER LIGHTS > PAR 56



FEATURES

Intended Use:	Exteriors
Installation:	Floor/wall mounting - to be installed EXCLUSIVELY IN WATER Max 40°C
Body/Structure:	Stainless steel body
Finish:	Satin stainless steel
Reflector/Optics:	PMMA LED Lens
Glass/Screen:	Clear tempered glass
Driver:	Not included; must be ordered separately

TECHNICAL DATA

Beam:	Concentric symmetrical 15°
Insulation class:	3
Weight:	1.3 kg
IP grade:	68
Glow wire:	850 °C
Lamp included:	Yes
LED type:	Power LED
Overall power:	73 W
Appliance flow:	2841 lm
Nominal duration:	50000
Color temperature:	RGBW
Color consistency:	4 SDCM

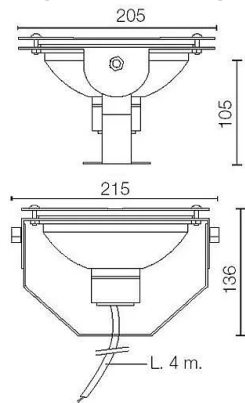
LIGHT SOURCE: 1 x LED 73.00W 2844lm



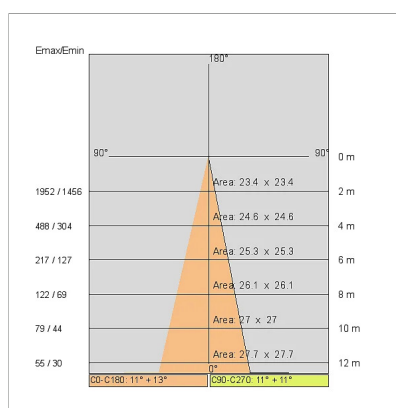
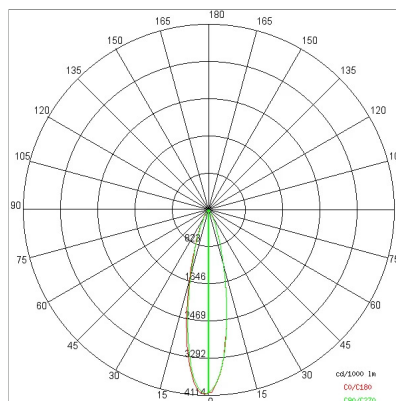
NOTES

Maximum nighttime ambient temperature when the fitting is on not exceeding 50°C
Minimum nighttime ambient temperature when the fitting is on not lower than -20°C
Maximum daytime ambient temperature when the fitting is off not exceeding 60°C

TECHNICAL DRAWING



PHOTOMETRIC CURVES



ACCESSORIES

DMX controller



COMPANY

Side Spa has always been a benchmark in the manufacturing industry for its constant focus on product quality, assembly and sustainability of its items. The company is distinguished by its dedication to offering customers the highest quality products that meet needs and exceed expectations.

Side Spa pays the utmost attention to the quality of its products. Each stage of production undergoes rigorous quality control to ensure that only first-class items reach the market. By using high-quality materials and adopting state-of-the-art manufacturing processes, the company is able to offer products that stand the test of time and maintain their performance over the years. Quality is a top priority for Side Spa, which strives to meet the highest standards of excellence.