



FEATURES

Intended Use:	Interior
Installation:	Recessed Ceiling
Recessed hole:	Recessed hole diam.205 mm. Ceiling thickness: 5-30 mm.
Fixing:	Steel wire springs
Body/Structure:	Die-cast aluminum body EN AB-47100
Painting:	Interior polyester powder coating
Finish:	Black
Reflector/Optics:	99.8% pure aluminum reflector - Removable and adjustable optics
Glass/Screen:	Clear tempered glass
Driver:	Remote power supply for LED, stabilized output 700mA dc

TECHNICAL DATA

Tension:	220-240V 50/60Hz
Beam:	Concentric symmetrical 20°
Current:	700mA
Insulation class:	2
Weight:	2.4 kg
Glow wire:	850 °C
Lamp included:	Yes
LED type:	COB LED
Overall power:	24 W
Appliance flow:	3533 lm
Nominal duration:	50.000 (h) L90 B20
Color temperature:	4000 K
Color rendering index:	> 90
Color consistency:	3 SDCM

LIGHT SOURCE: 1 x LED 24W 3570lm

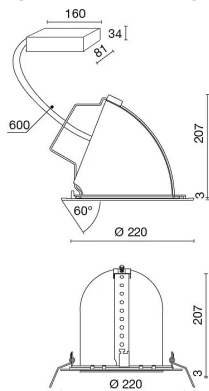


NOTES

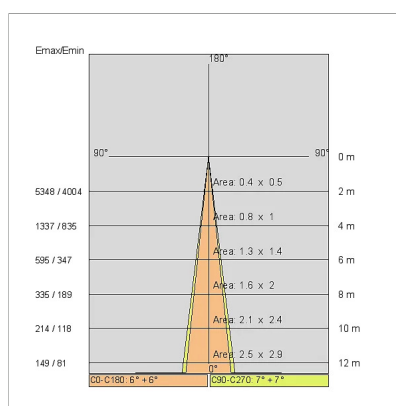
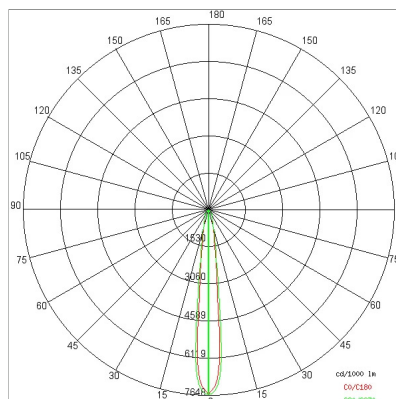
On request: Led with 2700K COLOR temperature.

On request:   

TECHNICAL DRAWING



PHOTOMETRIC CURVES



ACCESSORIES



1H emergency kit
INV 1052



3H emergency kit
INV 1052-3

COMPANY

Side Spa has always been a benchmark in the manufacturing industry for its constant focus on product quality, assembly and sustainability of its items. The company is distinguished by its dedication to offering customers the highest quality products that meet needs and exceed expectations.

Side Spa pays the utmost attention to the quality of its products. Each stage of production undergoes rigorous quality control to ensure that only first-class items reach the market. By using high-quality materials and adopting state-of-the-art manufacturing processes, the company is able to offer products that stand the test of time and maintain their performance over the years. Quality is a top priority for Side Spa, which strives to meet the highest standards of excellence.