



FEATURES

Intended Use:	Interior
Installation:	Track Mounting
Fixing:	Electrical adapter for rail mounting
Body/Structure:	Aluminum sheet metal body
Painting:	Interior polyester powder coating
Finish:	White
Glass/Screen:	Bi-satin polycarbonate diffuser screen
Driver:	Integrated driver for LED, 500mA dc stabilized output

TECHNICAL DATA

Tension:	220-240V 50/60Hz
Beam:	Symmetrical diffusing
Current:	700mA
Insulation class:	1
Weight:	3.50 kg
IP grade:	40
Glow wire:	650 °C
Lamp included:	Yes
LED type:	Power LED
Overall power:	27 W
Appliance flow:	3374 lm
Nominal duration:	50.000 L70 B10
Color temperature:	4000 K
Color rendering index:	>90
Color consistency:	3 SDCM

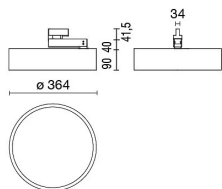
LIGHT SOURCE: 1 x LED 27.00W 4200lm



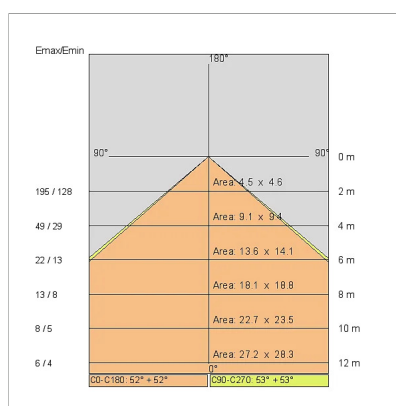
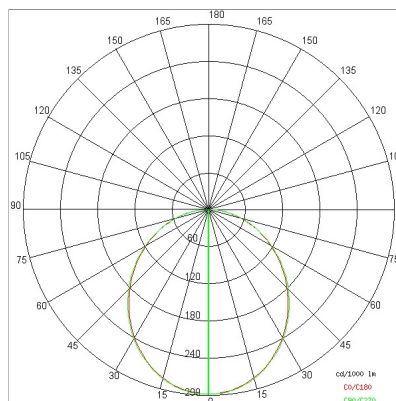
NOTES

upon request: UGR<lt;19 version available

TECHNICAL DRAWING



PHOTOMETRIC CURVES



ACCESSORIES

DIAMOND PRISM diffuser for UGR version

409600

DIAMOND PRISM Screen

COMPANY

Side Spa has always been a benchmark in the manufacturing industry for its constant focus on product quality, assembly and sustainability of its items. The company is distinguished by its dedication to offering customers the highest quality products that meet needs and exceed expectations.

Side Spa pays the utmost attention to the quality of its products. Each stage of production undergoes rigorous quality control to ensure that only first-class items reach the market. By using high-quality materials and adopting state-of-the-art manufacturing processes, the company is able to offer products that stand the test of time and maintain their performance over the years. Quality is a top priority for Side Spa, which strives to meet the highest standards of excellence.